



# NEWSLETTER

13<sup>TH</sup> FEBRUARY 2026

## A MESSAGE FROM THE HEADTEACHER

Dear Families,  
World Hijab Day

What a truly wonderful occasion World Hijab Day was this year! The enthusiasm and warmth shown by our pupils, staff, and families made it a genuinely memorable celebration. As a school, we are immensely proud of the inclusive environment we have built together — one where every member of our community feels a real, authentic sense of belonging. Days like these are a reminder of why that work matters so much.

Looking Ahead: Celebrations to Come

We have so much to look forward to in the coming months! We are excited to be celebrating Holi, Lunar New Year, Black History Month, Iftar, Diwali, Portugal Day, and International Day, among many others. We would love for these occasions to be as meaningful and special as possible, and that starts with you. We always welcome input from our families — please speak to any member of staff if you would like to share ideas or be involved in the planning.

Welcome, Carl Clarke — Our Newest Parent Governor

We are delighted to welcome Carl Clarke as our newest parent governor. His dedication to our school community is clear, and the time and commitment he brings to this role are truly valued. We are excited to have him as part of the team that helps shape the future of our school — and we look forward to achieving great things together.



Join Our Parent Teacher Association

If you are passionate about enriching the school experience for our children and wider community, we would love to hear from you! We are currently recruiting new members for our Parent Teacher Association. Please see Mrs Makinson if you are interested or would like more details.



## Thank You — Parent Survey Results

A heartfelt thank you to everyone who took the time to complete our recent parent survey — this was the highest number of responses we have ever received, and the results were overwhelmingly positive. We are so encouraged by your feedback, and we hope you enjoy the snapshot included. Please know that we are always looking for ways to improve, and your voice truly matters to us.

### Module summary from most to least positive

Positive responses

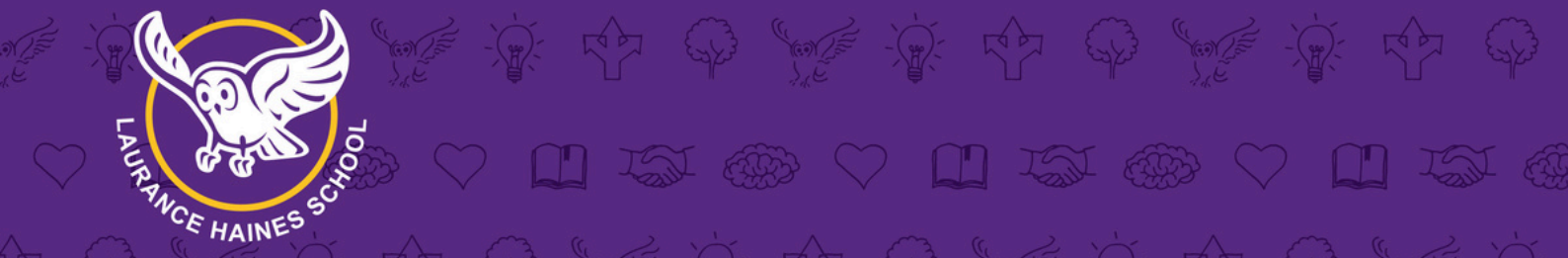
87%	Parental confidence
86%	Mutual trust and respect
81%	Pupil needs
80%	General
79%	Communication methods
78%	Parents' events
76%	School accessibility
75%	Informing parents
72%	Relationship with the Trust

Thank you, as always, for your continued support. Together, we are making our school an extraordinary place.

Have a wonderful half term and we look forward to seeing you all back on Monday 23<sup>rd</sup> February.

Warm regards,

Jo Ball  
Head Teacher



# IN THE SPOTLIGHT

This week, our school has been alive with colour, creativity and connection as we celebrated Children's Mental Health Week under the theme 'This is my Place'. We've observing something truly special: our children expressing what makes them unique whilst discovering the threads that bind us all together.

The theme couldn't be more fitting for our school community. Every day, we strive to ensure this is a safe place where everyone belongs, where differences are celebrated and where every child can truly be themselves.

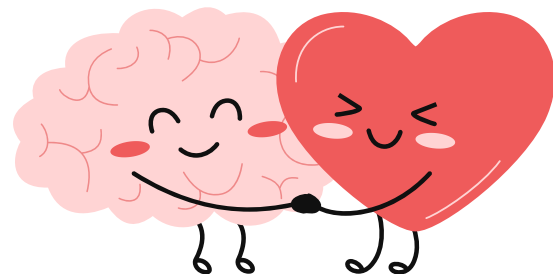
Each team made a Tree of Belonging, decorating a handprint with what makes them who they are – flags representing cultural heritage, favourite hobbies, families, pets and foods that remind them of home. The branches now hold hundreds of these precious hands, each one different, yet each one essential to making their trees complete.

The conversations whilst creating these hands were equally precious. Children shared stories about their lives, these moments of recognition and belonging are exactly what Children's Mental Health Week celebrates.

Our Hearts of Love activity has transformed our school into a warm place of affirmation and kindness. Classrooms now flutter with hearts bearing messages which support our motto - 'You see me. You hear me. I belong'. The hearts remind us that love is universal.

The impact extends far beyond our beautiful displays. We've created opportunities for children to feel proud of what makes them unique and to recognise that those very differences make our school community rich and vibrant. Our Tree of Belonging and Hearts of Love will remain as constant reminders that here, at Laurance Haines, everyone belongs.

Nic Furey  
Pastoral Support Team Leader



# YEAR 6 STEP BACK IN TIME TO THE 1940S

As part of their history learning, the children recently enjoyed an exciting and immersive trip back to the 1940s to experience what life was like during World War II.

The day began in a traditional 1940s classroom, where the children discovered just how different school life was during the war. They learned about the strict rules pupils were expected to follow, including standing when an adult entered the room, and the consequences children faced if they misbehaved.

The children found themselves in a realistic wartime scenario involving an unexploded bomb and were guided into a concrete air-raid shelter.

They also explored a fully furnished 1940s house, complete with authentic household items and traditional toys. The children enjoyed discovering how families lived and how children entertained themselves without modern technology.

Outside, they visited a victory garden, learning about rationing and the importance of growing food at home. They saw an Anderson shelter and even had the opportunity to operate an old-fashioned water pump to practise putting out a fire, just as people might have done during air raids.

The experience continued with a visit to a cinema room showing wartime footage, followed by time in a museum filled with genuine World War II artefacts. Some children were even able to carefully hold a World War II firearm under supervision, bringing their learning to life in a memorable way.

It was a fantastic trip that gave the children a deeper understanding of life in the 1940s and helped make their history learning truly unforgettable.



# SEND NEWS



## Neurodiversity Support Hub

For Parents, Carers and Professionals across Hertfordshire

📞 01727 833 963

✉️ [supporthub@add-vance.org](mailto:supporthub@add-vance.org)

Whether you need practical advice, emotional support or simply a listening ear, we're here for you.

### Helpline hours:

**Term Time:** Mon, Wed & Fri: 9am - 1pm

Tues & Thurs: 9am - 3pm

Wed evenings (by appointment): 7pm - 9pm

**School Holidays:** Mon - Fri: 9am - 1pm

All our helpline team are parents/carers of neurodivergent children.



# NURSERY NEWS

Mrs Oto has been teaching Dance to Nursery during their PE lessons. They have been experimenting with different movements and moving along to music lessons.



# DATES FOR YOUR DIARY

Please look on the school website for all term dates of the  
academic year 2025/2026

## February 2026

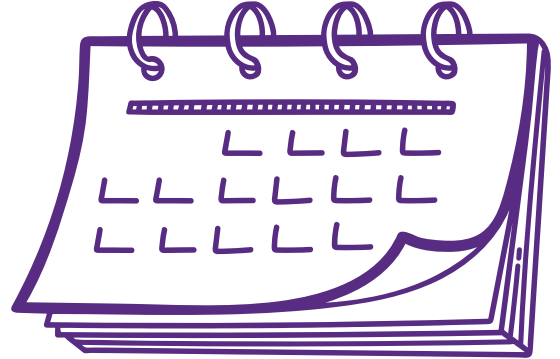
Week beginning 9<sup>th</sup> February - Feel Good Week  
Week beginning 9<sup>th</sup> February - Parent Consultations  
Tuesday 10<sup>th</sup> February - Safer Internet Day  
Monday 16<sup>th</sup> February - Friday 20<sup>th</sup> February - Half Term - No School  
Tuesday 17<sup>th</sup> February - Chinese New Year  
Tuesday 17<sup>th</sup> February - Shrove Tuesday  
Tuesday 17<sup>th</sup> February - Ramadan  
Friday 27<sup>th</sup> February - Community Iftar  
Friday 13<sup>th</sup> February - Chinese Lunar New Year Celebrations

## March 2026

Tuesday 3<sup>rd</sup> March - Celebrating SEND Day  
Thursday 5<sup>th</sup> March - World Book Day  
Monday 30<sup>th</sup> March - Friday 10<sup>th</sup> April - Easter Holidays - No School

## APRIL 2026

Monday 13<sup>th</sup> April - Back to school



# WORLD BOOK WEEK



**WORLD BOOK DAY®**  
5 March 2026

## £1 Book Token

Valid from 12 February – 15 March 2026

Win Yoto's ultimate reading bundle!

Discover the incredible world of audiobooks with Yoto. Win a **Yoto Player** and **up to £200** worth of Yoto cards from the large library selection in Yoto's card store.

To enter and for full terms and conditions go to [worldbookday.com/yoto-competition](http://worldbookday.com/yoto-competition).

One entry per person. Winners will be notified shortly after 15 March 2026.

Prize promotion runs from 12 February to 15 March 2026.

9 930430 261003

**Choose your £1 book for free!**

Children, families & educators: This token is for single-use only and entitles children (under 18) to **ONE FREE World Book Day 2026 book** or £1 off a book or audiobook costing £2.99 or more in participating booksellers only, subject to stock availability.

Find your nearest participating bookseller at [worldbookday.com/books-and-tokens/participating-retailers/](http://worldbookday.com/books-and-tokens/participating-retailers/)

Full terms and conditions: [worldbookday.com/terms-conditions](http://worldbookday.com/terms-conditions)

Retailers: Full terms and conditions: [worldbookday.com/booksellers/](http://worldbookday.com/booksellers/)

Promoter: World Book Day® is a registered charity (no. 1079257) and registered company (no. 03783095) in the UK. World Book Day and the associated logo are the registered trademarks of World Book Day Limited.

Peppa Pig © 2026 ABD Ltd/Hasbro/HCP Ltd. Unicorn Academy © & TM Spin Master Ltd. All rights reserved. © 2026 The Roald Dahl Story Company Ltd.

Sponsored by **NATIONAL BOOK tokens**

Books featured: One Big Family, THE BIG BANG!, UNITI UNIFI, UNICORN DIARY, PARIS SPLASH, Peppa Pig's PET CLUB, FACTOPEDIA, CHADS & CHOCOLATE FACTORY, FOOTBALL, SUNNY MONKEY, HADIMAH GOLD, BEAR RESCUE, SKANDAR, AGAINST ALL ODDS.

World Book Day Week - Week Beginning 2<sup>nd</sup> March (look out for the letter detailing the following events)

Monday 2<sup>nd</sup> March: Start of Book Swaps in school.

Tuesday 3<sup>rd</sup> March: Live online bedtime story.

Wednesday 4<sup>th</sup> March: Mega Reading Breakfast! 8.50am – 9.30am.

Thursday 5<sup>th</sup> March: World Book Day itself!

Friday 6<sup>th</sup> March: The Big Book and Bake Sale! 3.20pm – 4pm



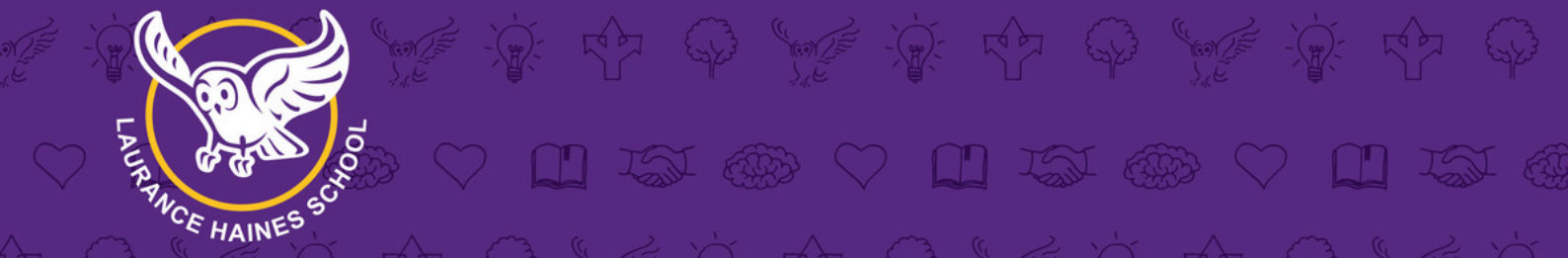
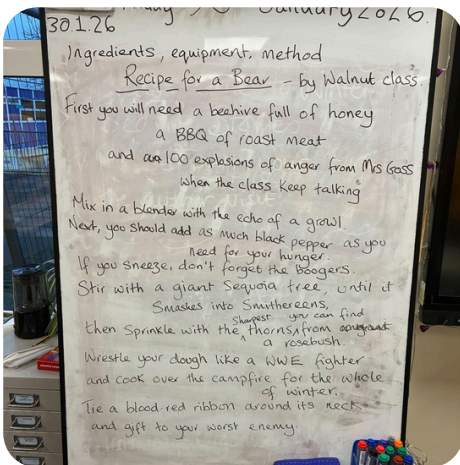


# READING PAGE

As you may know, we were delighted to welcome author Sarah Ziman on Friday 30th January. During her visit, the children had a wonderful opportunity to work with Sarah to write poems. Each class from Years 3 to 6 collaborated on a group poem.

Please see the link below to read the poems—we hope you enjoy sharing them with your children.

<https://www.sarahziman.co.uk/news/poems-from-laurance-haines-primary>



# What's On over February Half-term



**Wild Play at Leavesden  
Country Park  
17th February**

Join Groundwork East this February half-term to take part in FREE nature play sessions. Learn more about your local greenspace and nature through scavenger hunts, natural art and play.

Suitable for under 9s however, siblings are welcome. All children must be accompanied by an adult at ALL times.

<https://www.eventbrite.co.uk/e/wild-play-leavesden-country-park-tickets-1980713651852t>



**WATFORD  
BOROUGH  
COUNCIL**



**Wild Play - Watford  
Oxhey Park Bridge**

**Various times on 16<sup>th</sup> & 18<sup>th</sup> February**

Learn about Watford's wildlife and heritage through fun family activities.

Suitable for ages 3-9 with their parents/guardians (other siblings welcome).

**FREE nature play sessions.**

For more info and booking please visit:

<https://www.eventbrite.co.uk/e/wild-play-watford-tickets-1980184529232>

**Cassiobury Park Hub Events**

Bird Craft - 17<sup>th</sup> Feb at 10.30am

Storytime - 19<sup>th</sup> Feb at 10.30am

<https://www.eventbrite.co.uk/o/cassiobury-park-hub-team-18604052103>



Zootropolis 2  
17 February 2026



The Spongebob Movie: Search for  
Squarepants  
18 February 2026



**Watford Pancake Race**  
17<sup>th</sup> February at 2.30pm  
Pondside, The Parade,  
Watford

This much-loved event will feature business relay races, accessible races and children's races, making it inclusive and fun for all.

Highlights include a special appearance from Harry the Hornet, post-race refreshments at the Library Café. All funds raised will support Watford Mencap's vital work with children and adults with learning disabilities and their families and the Watford Community Fund supporting Watford organisations helping families and individuals.

<https://www.w3rt.org/the-watford-pancake-race-2026t>



The Pump House Theatre,  
Watford

19<sup>th</sup> - 21<sup>st</sup> February  
Rickmansworth Players  
Youth present everyone's  
favorite ogre in Shrek The  
Musical JR

<https://pumphousewatford.co.uk/events/shrek-jr/>



Films showing at  
Watersmeet Theatre

<https://www.watersmeet.co.uk/february-half-term>





# SAFETY AROUND OUR SCHOOL

Laurance Haines School has received a number of letters from local residents living in 'Rose Gardens' expressing their on going safety concerns for irresponsible and unsafe parking around our school.



A few reminders for our school community;

**STAY  
SAFE**

DO NOT PARK ON PAVEMENTS

DO NOT BLOCK DRIVEWAYS



DO NOT PARK ON DOUBLE YELLOW LINES

Please be more considerate when parking for drop off before school and after school and use designated parking spaces over the bridge



The best solution is to  
WALK TO SCHOOL

