



# NURSERY INDUCTION MEETING

JULY 2023

WELCOME TALKS



LAURANCE HAINES  
SCHOOL

- ▶ **A welcome from our Head Teacher including house keeping**
- ▶ **A hello from the Nursery Team and EYFS Leader**
- ▶ **An overview of the role of the Pastoral Lead and SENCO**

# LEADERSHIP TEAM



**LAURANCE HAINES**  
SCHOOL



Mrs Jo Ball  
Headteacher



Mrs Michelle Connell  
SENCO



Mr Simon Englander  
Assistant Headteacher



Mrs Nicola Furey  
PST Leader



Mrs Yasmin Moody  
Foundation Stage Leader

# NURSERY TEAM



**LAURANCE HAINES**  
SCHOOL



Mrs Yasmin Moody  
Class Teacher



Mrs Jill Green  
Senior Early Years  
Practitioner



Mrs Sarah Lees  
Senior Early Years  
Practitioner



Mrs Linda Butler  
Teaching Assistant



Mrs Magda Oto  
Teaching Assistant



Ms Lisa Mazit  
Teaching Assistant



Miss Rachel Green  
Teaching Assistant

# DROP, STOP AND CHAT



**LAURANCE HAINES**  
SCHOOL



Monday 11<sup>th</sup> September

9am

10am

1pm

## ATTENDANCE AND PUNCTUALITY



**LAURANCE HAINES**  
SCHOOL

- ▶ If your child is unable to attend school due to illness, please ring the school office in the morning.
- ▶ If your child has an appointment could you please inform the school office with the details.
- ▶ Laurance Haines will not authorise any absences during term time.
- ▶ Our target for attendance is 100%



School success starts  
with attendance



## ATTENDANCE AND PUNCTUALITY



**LAURANCE HAINES**  
SCHOOL

**As parents, please help us by:**

- ▶ **Ensuring your child arrives on time**
- ▶ **Ensuring your child is properly dressed in the correct uniform**
- ▶ **Encouraging good behaviour**
- ▶ **Notifying us if your child is ill**

CHILDREN'S WELFARE



LAURANCE HAINES  
SCHOOL

## Accidents do happen!

- We encourage children to explore and take risks within a safe space.
- We have trained first-aiders but will contact you if we think necessary.
- Please inform us about medical conditions.
- If your child has a accident on the way to school, please inform us and complete our accident form.
- Please keep children at home and for 24hrs after sickness.

We do not shy away from risk and actively encourage our children to experience more risky activities, such as fire building and tree climbing, in an environment that can support them to do so as safely as possible!



# SENDCO SUPPORT



**LAURANCE HAINES**  
SCHOOL

Hello, I am the school SENDCO. I work with parents and school staff to ensure our children with Special Educational Needs are happy and have their needs met for the time that they are in school. If you do ever have any concerns regarding your child's development or progress in school, please do not hesitate to make an appointment to meet with me.

For further information about how we support our children with SEND, please take a read of our SEND Information Report which can be found on our school website <https://www.lhaines.herts.sch.uk/attachments/download.asp?file=2150&type=pdf>

Michelle Connell  
Working days - Wednesday to Friday  
[senco@lhaines.herts.sch.uk](mailto:senco@lhaines.herts.sch.uk)

AIMS



**LAURANCE HAINES**  
SCHOOL

- ▶ **Today we will give you information about the learning that takes place in Nursery.**
- ▶ **We will inform you about what your child will need in preparation for September.**
- ▶ **We will also let you know about how you can help your child settle when they come to Nursery and how you can help at home.**

# GETTING TO KNOW YOU



**LAURANCE HAINES**  
SCHOOL

**We will do this by:**

- ▶ **Home visits**
- ▶ **Stay and play sessions**
- ▶ **Drop in sessions - Park**
- ▶ **Information gathered from you**
- ▶ **Opportunities to ask questions and share concerns**

# NURSERY HOURS



**LAURANCE HAINES**  
SCHOOL

- ▶ **Morning Nursery 8:30 – 11:30**
- ▶ **Afternoon Nursery 12:30 – 3:30**
- ▶ **30 hours Nursery 9:00 – 3:00**



**Children start with activities that encourage them to strengthen the muscles in their fingers. It is important that they arrive on time as this session supports children's ability to develop their pencil control.**

# COMMUNICATION



**LAURANCE HAINES**  
SCHOOL

**School Office Opening hours: 8.40am – 4.30pm**

**We use a number of ways to keep you in touch with you:**

- **Weekly Nursery newsletter**
- **Fortnightly whole school newsletter**
- **Text messaging/email service**
- **Parent meetings**
- **Website**
- **Tapestry**
- **Facebook**
- **Twitter**  **@NurseryLHS @LHS\_Watford**



**Please ensure the front office has your most current address and phone number. If you change your mobile number let us know immediately so that we are able to contact you in the case of emergency.**

**Please ensure we are aware of any allergies your child may have.**

HOME VISITS



**LAURANCE HAINES**  
SCHOOL

Monday 4<sup>th</sup> September –  
Friday 8<sup>th</sup> September

We would love to invite you all to Harwoods Park  
on Friday 8<sup>th</sup> September between  
1pm – 3pm! Monday 11<sup>th</sup> 30hoys 9am  
10am  
1pm

# STARTING NURSERY



**LAURANCE HAINES**  
SCHOOL

**Staggered start over three weeks**

**Sessional Nursery**

- **Week 1 – 1 hour session (Monday 11th September)**

**Morning Red and Blue group – 10am - 11am**

**Afternoon Red and Blue group – 1pm – 2pm**

- **Week 2 - 2 hour session (Monday 18th September)**

**Morning Red and Blue group – 9am – 11am**

**Afternoon Red and Blue group – 1pm – 3pm**

- **Week 3 - All start full time (Monday 25<sup>th</sup> September)**



# STARTING NURSERY

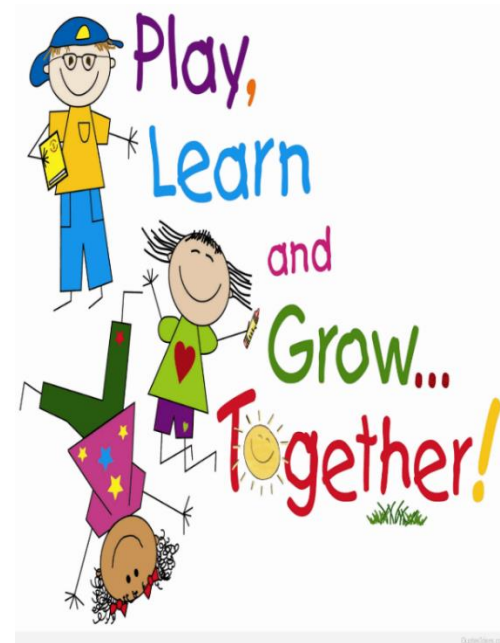


**LAURANCE HAINES**  
SCHOOL

**Staggered start over three weeks**

**30 Hours Nursery**

- **Week 1 - 9:00 - 11:00 (Monday 11<sup>th</sup> September)**
- **Week 2 - 9:00 -12:30 - stay for lunch (Monday 18th September)**
- **Week 3 - All day - full time 9:00 – 3:00 (Monday 25<sup>th</sup> September)**





# KEY WORKERS



**LAURANCE HAINES**  
SCHOOL

- ▶ The **key worker** is a named practitioner who has **responsibilities** for a small group of children, they are there to help your child feel safe and secure.
- ▶ The **role** is important for both child and parent
- ▶ A **Key Worker** will be a point of contact for parents as well as the Nursery Teacher



# A TYPICAL DAY



**LAURANCE HAINES**  
SCHOOL

## Morning session

8:30 – 9:00

Busy Fingers

Carpet time

9:00 – 11:00

Book of the week

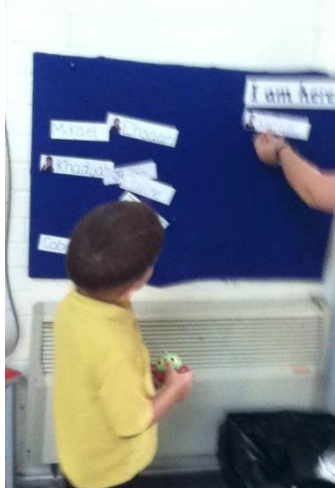
Phonics

Child initiated learning

Focus Activities/Maths/Topic

11:00 – 11:30

Snack, story, songs and home time



## Afternoon session

12:30 – 1:00

Busy Fingers

Carpet time

1:00 – 3:00

Book of the Week

Phonics

Child initiated learning

Focus Activities/Maths/Topic

3:00 – 3:30

Snack, story, songs and home time

# THE EARLY YEARS CURRICULUM



**LAURANCE HAINES**  
SCHOOL

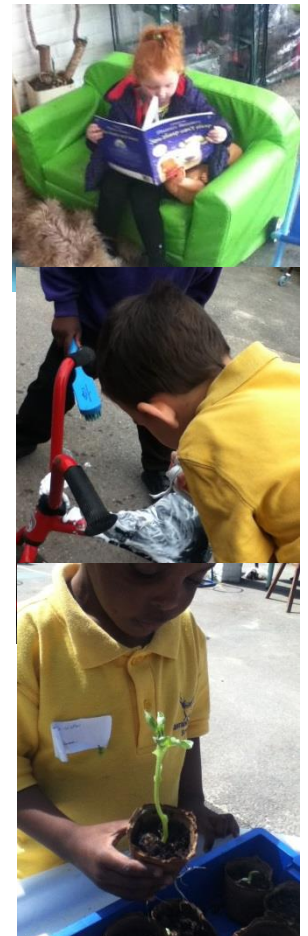
There are 7 areas of learning.

The 3 prime areas children develop first are:

- ▶ Communication and language
- ▶ Physical development
- ▶ Personal, social and emotional development

The 4 specific areas are:

- ▶ Literacy, Mathematics, Understanding the World and Expressive arts and design



PSED



LAURANCE HAINES  
SCHOOL

- **Interacting with others**
- **Dealing with emotions**
- **Developing confidence**
- **Reflecting on behaviour and consequences**

PD



**LAURANCE HAINES**  
SCHOOL

- **Use large scale movements such as climbing, running, jumping**
- **Manipulating objects using small scale movements e.g. cutting, drawing, threading**
- **Pencil control**
- **Health, self-care and Personal hygiene**



- **Talking with peers and familiar adults**
- **Following instructions and understanding questions**
- **Using talk for imaginary situations**
- **Listening to and understanding stories**



- **Singing number rhymes & counting**
- **Exploring patterns & shapes**
- **Problem solving using their own ideas and working with others**



- **Exploring books**
- **Listening for sounds and rhyme**
- **Hearing sounds and recognising letters**
- **Mark making**
- **Writing simple sentences with some simple punctuation**



UTW



LAURANCE HAINES  
SCHOOL

- **Exploring the world around them**
- **Using computers and other technology**
- **Awareness of own and other cultures and celebrations**

EAD



LAURANCE HAINES  
SCHOOL

- **Enjoy messy activities, exploring what happens**
- **Developing their ideas**
- **Exploring a range of media**
- **Role-play and make believe**
- **Music and dance**

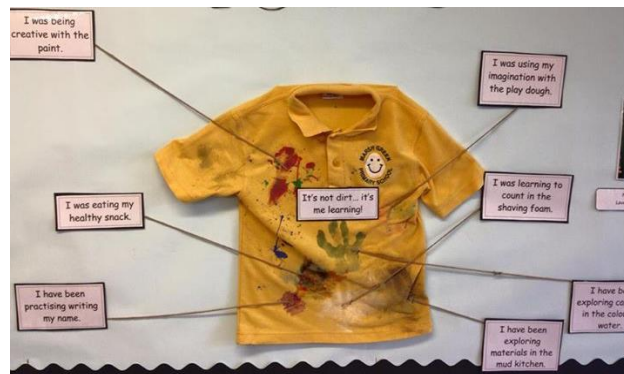
# PLAY



## LAURANCE HAINES SCHOOL

Each day the children have a period of child initiated learning. This is where the children learn through their play. It is a very important part of the children's learning. Playing helps a child with their communication skills, personal and social skills, problem solving, physical and creative skills as well as their mathematical and literacy ability.

**Nursery Learning is not always clean! Please be understanding!**



# OUTSIDE LEARNING WHATEVER THE WEATHER



**LAURANCE HAINES**  
SCHOOL

The children will also spend time playing and exploring outside. This helps their physical skills as much as their ability to learn about the world around them.

## We use the garden as our outside classroom!



# INFORMATION



LAURANCE HAINES  
SCHOOL

You will find lots of information about starting school, Videos from the teachers and exciting things you can do with your child on our website.

## Pupils / Nursery / New to Nursery 2023/24



LAURANCE HAINES SCHOOL

TRANSLATE



HOME OUR SCHOOL NEWS & EVENTS PUPILS ADMISSIONS PARENTS CONTACT US

YEAR GROUPS

CELEBRATIONS  
AND AWARDS

PUPIL VOICE

### IN THIS SECTION

MEET THE  
TEACHER

NURSERY  
NEWSLETTERS

EARLY YEARS  
FOUNDATION  
STAGE (EYFS)  
FRAMEWORK

USEFUL LINKS

NEW TO NURSERY  
23/24

HOME PUPILS YEAR GROUPS NURSERY

## Nursery

### Welcome to Nursery!

Our EYFS Leader and Nursery Teacher is Mrs Moody.

Mrs Green is our Senior Early Years Practitioner and Mrs Butler, Miss Rachel, Miss Oto and Ms Mazit are our Nursery Teaching Assistants.

Our Nursery times are:

- Morning Nursery Session: 8:30am - 11:30am
- Afternoon Nursery Session: 12:30pm - 3:30pm
- 30 Hours Nursery: 9:00am - 3:00pm

Follow us on Twitter @NurseryLHS

WELCOME TO EARLY YEARS FOUNDATION STAGE PDF



### IN THIS SECTION

NURSERY

RECEPTION

HOME PUPILS YEAR GROUPS

## Year Groups

Please click on the links to the left to visit the Year Group pages to find information about staff,

HOME PUPILS YEAR GROUPS NURSERY NEW TO NURSERY 23/24

## New to Nursery 23/24

We want to wish a very warm welcome to Laurance Haines Primary School to all the families who are joining our Nursery in September 2023.

We would like to provide you with as much information as possible to ensure your child's smooth transition into our Nursery class in September and enable you to feel part of our school community.

We will endeavour to where possible arrange opportunities for your child to meet their teachers and their peers whether this is through virtual communication or face to face meetings. If you would like to find out more details about the starting school procedures, staff, environment, curriculum and much, much more please do watch the 'Parents Induction PowerPoint'.

This page is just for you and we hope you will find it very useful! In the coming days and weeks, we will post lots of useful information.

We will soon be in touch to arrange a home visit in September to meet you and your child and answer any questions you may have.

You may also like to follow us on Twitter @LHS\_Watford @NurseryLHS to keep up to date with the latest school news.

# SNACK



**LAURANCE HAINES**  
SCHOOL

**Everyday the children are provided with a piece of fruit/veg and a drink of milk or water.**

**This is a very important part of our daily routine.**

**Your child is entitled to free school milk.**



# LUNCHTIMES



**LAURANCE HAINES**  
SCHOOL

Lunch is provided by Chartwells Ltd.

They prepare a number of freshly cooked hot meals every day, which includes a vegetarian option. There are also jacket potatoes with various fillings.

They cater for a wide variety of dietary requirements including halal

If you would like your children to have a school dinner then it is £2.45 everyday. Alternatively your child can bring in a packed lunch.

Our menu will change each term to reflect the changing seasons.



@lunch\_at\_LHS





# YOUR CHILD WILL NEED



**LAURANCE HAINES**  
SCHOOL

- **A Book bag**
- **Wellington boots**
- **Named Water Bottle**
- **Rain/Puddle Suit**
- **A drawstring bag with spare clothes**
- **A coat**





# YOUR CHILD WILL NEED



## LAURANCE HAINES SCHOOL

- **School uniform**
- **Every child must wear the correct uniform**
- **Our Uniform Supplier is Mapac, order online or by post**
- **Velcro shoes – no laces until they can tie them!**
- ▶ **Please ensure ALL of your child's belongings are clearly labelled. This make it much easier to return any lost items.**
- ▶ **Wellington boots and puddle suits are a good investment for the colder winter months. We learn outside at all times in the year!**



THE PARENTS - YOU



**LAURANCE HAINES**  
SCHOOL

**A child's parents are their main educators. At Laurance Haines we value your partnership and thank you for entrusting us with the care and education of your children.**

**There are lots of ways you can get involved in school life:**

- **Have daily contact with the adults in your child's class**
- **Attend meetings designed to help you to support your child at home**
- **Read and contribute to Learning Journeys (Tapestry)**
- **Help in school – volunteer in classrooms, come along to the library, talk to us about your skills or interests**
- **Help us with your expertise**

# HOW CAN YOU HELP US



## LAURANCE HAINES SCHOOL

**Over the summer please begin to work with your child on:**

- ▶ **Toilet training**
- ▶ **Dressing and undressing themselves**
- ▶ **Recognising, counting to 5.**
- ▶ **Answering questions about outings you have been on**
- ▶ **Provide instructions for them to follow e.g. please put your toys in the box and choose a reading book**



THE LEARNING JOURNEY

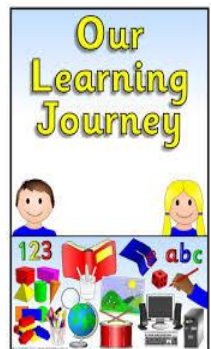


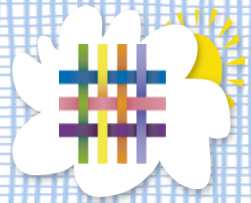
LAURANCE HAINES  
SCHOOL

We track children's learning through use of Learning Journeys through the app Tapestry.

Learning journey consists of photographs, recordings and observations that have been taken during the school day.

Further details about our Learning Journeys will be provided in September.

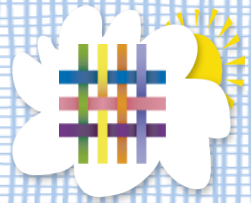




# What Is Tapestry?

- An Online learning journal system.
- Staff record children's progress and activities using tablet devices and PCs.
- Parents can view their child's journal on mobile devices and on their home computers, and can make observations of their own using a secure login system.





## How Does It Work?

- Photos, videos and observations are uploaded to Tapestry.
- It is accessed via the Android/iOS app or the Tapestry website.
- It enables you to comment on observations or add your own, so you can show us what your child is doing outside the school day – weekend trips, exciting learning opportunities, trip to the shops etc.
- Email notifications can be sent to inform parents of new observations and comments.

# EARLY YEARS PUPIL PREMIUM



**LAURANCE HAINES**  
SCHOOL

**As a school we are able to claim an additional grant per pupil, called the Early Years Pupil Premium, for children whose parents or carers receive certain benefits.**

**Schools decide how to use their Pupil Premium allocation, as they are best placed to assess what additional provision should be made for these pupils within their responsibility.**

**It is important that you let us know if you may be eligible. We can help you apply.**

# PARENT VIEW



## LAURANCE HAINES SCHOOL

Parent View gives you the chance to register what you think about the school. This information is used by the leadership team to inform strategic decisions as well as by Ofsted when they inspect the school.

There's a link on our website. Search 'Parentview' in Google or go to <https://parentview.ofsted.gov.uk>

- ▶ Follow the on-screen instructions to enter your email address and password .
- ▶ You'll be sent an email with a link to activate your login.
- ▶ Log-in and answer 12 simple questions.





# QUESTION TIME



**LAURANCE HAINES**  
SCHOOL

**No question is a silly question...**

**If anyone has anything they would like to ask please feel free to do so.**

**If you have any questions personal to your family there will be an opportunity to ask these at your virtual home visit or at a specially arranged meeting.**

**[earlyyears@lhaines.herts.sch.uk](mailto:earlyyears@lhaines.herts.sch.uk)**



# Finally...

Thank you for attending today. All of the staff are looking forward to meeting you and the children.

If you have any concerns or issues during the next year please come and speak to one of us.

Many thanks for coming!