



RECEPTION INDUCTION MEETING

JUNE 2023

WELCOME TALKS



LAURANCE HAINES
SCHOOL

- ▶ **A welcome from our Head Teacher including house keeping**
- ▶ **A hello from the Reception Teachers and EYFS Leader**
- ▶ **An overview of the role of the Pastoral Lead and SENCO**

LEADERSHIP TEAM



LAURANCE HAINES
SCHOOL



Mrs Jo Ball
Headteacher



Mrs Michelle Connell
SENCO



Mr Simon Englander
Assistant Headteacher



Mrs Nicola Furey
PST Leader



Mrs Yasmin Moody
Foundation Stage Leader

RECEPTION TEAM



LAURANCE HAINES
SCHOOL



Miss Danielle Allen
Pear Class Teacher



Miss Katie Smart
Plum Class Teacher



Mrs Jill Green
Senior Early Years
Practitioner



Mrs Sarah Lees
Senior Early Years
Practitioner



Ms Pandora Moyo
Teaching Assistant



Mrs Olivia Dutta
Teaching Assistant

DROP, STOP AND CHAT



LAURANCE HAINES
SCHOOL



Monday 4th September

9am

ATTENDANCE AND PUNCTUALITY



LAURANCE HAINES
SCHOOL

- ▶ If your child is unable to attend school due to illness, please ring the school office in the morning.
- ▶ If your child has an appointment could you please inform the school office with the details.
- ▶ Laurance Haines will not authorise any absences during term time.
- ▶ Our target for attendance is 100%
- ▶ Book dental/medical appointments for October half term NOW!



School success starts
with attendance



ATTENDANCE AND PUNCTUALITY



LAURANCE HAINES
SCHOOL

As parents, please help us by:

- ▶ **Ensuring your child arrives on time**
- ▶ **Ensuring your child is properly dressed in the correct uniform**
- ▶ **Encouraging good behaviour**
- ▶ **Notifying us if your child is ill**
- ▶ **Avoiding appointments in school time**
- ▶ **Not taking holidays in term-time**

CHILDREN'S WELFARE



LAURANCE HAINES
SCHOOL

Accidents do happen!

- We encourage children to explore and take risks within a safe space.
- We have trained first-aiders but will contact you if we think necessary.
- Please inform us about medical conditions.
- If your child has a accident on the way to school, please inform us and complete our accident form.
- Please keep children at home and for 24hrs after sickness.

We do not shy away from risk and actively encourage our children to experience more risky activities, such as fire building and tree climbing, in an environment that can support them to do so as safely as possible!

SENDCO SUPPORT



LAURANCE HAINES
SCHOOL

Hello, I am the school SENDCO. I work with parents and school staff to ensure our children with Special Educational Needs are happy and have their needs met for the time that they are in school. If you do ever have any concerns regarding your child's development or progress in school, please do not hesitate to make an appointment to meet with me.

For further information about how we support our children with SEND, please take a read of our SEND Information Report which can be found on our school website <https://www.lhaines.herts.sch.uk/attachments/download.asp?file=2150&type=pdf>

Michelle Connell
Working days - Wednesday to Friday
senco@lhaines.herts.sch.uk

AIMS



LAURANCE HAINES
SCHOOL

- ▶ Today we will give you information about the learning that takes place in Reception.
- ▶ We will inform you about what your child will need in preparation for school in September.
- ▶ We will also let you know about how you can help your child settle when they come to school and how you can help at home.

GETTING TO KNOW YOU



LAURANCE HAINES
SCHOOL

We will do this by:

- ▶ **Home visits**
- ▶ **Nursery Visits**
- ▶ **Transition Day**
- ▶ **Stay and play sessions**
- ▶ **Information gathered from you**
- ▶ **Opportunities to ask questions and share concerns**

SCHOOL HOURS



LAURANCE HAINES
SCHOOL

- ▶ Gate open at 8.40
- ▶ Doors close at 8:50
- ▶ Main office after 8:50
- ▶ School finishes at 3.20



If your child is late for any reason and arrives after 8.50, the classroom door will be closed and you must take them to the school office to be registered.

Children start with activities that encourage them to strengthen the muscles in their fingers. It is important that they arrive on time as this session supports children's ability to develop their pencil control and writing as the year progresses.

COMMUNICATION



LAURANCE HAINES
SCHOOL

School Office Opening hours: 8.30am – 4.30pm

We use a number of ways to keep you in touch with you:

- **Weekly Reception newsletter**
- **Fortnightly whole school newsletter**
- **Text messaging/email service**
- **Tapestry**
- **Parent meetings**
- **Website**
- **Facebook**
- **Twitter**  **@ReceptionLHS @LHS_Watford**

Please ensure the front office has your most current address and phone number. If you change your mobile number let us know immediately so that we are able to contact you in the case of emergency.

Please ensure we are aware of any allergies/medical conditions your child may have.



STAY AND PLAY



LAURANCE HAINES
SCHOOL

We would like to invite your child in
for a stay and play session on
Thursday 13th July.

9:30 – 11:30

VISITS



LAURANCE HAINES
SCHOOL

We will be carrying out Nursery visits in July.

Home visits will take place in September.

Open Evening – Monday 10th July
5:30-6:30

STARTING SCHOOL



LAURANCE HAINES SCHOOL

Staggered start over two weeks

- **Week 1 - 8:50 -11:30 (Monday 4th September)**
Lunch - Thursday and Friday (12:30)
- **Week 2 - All day – 8:50 – 3:20 (Monday 11th September)**





LAURANCE HAINES
SCHOOL

Our Routine

Busy Fingers

Phonics (RWI)

Rolling snack throughout

Child initiated learning

Maths

Lunch time





LAURANCE HAINES
SCHOOL

Our Routine

Massage / Number of the Week

Topic / PSHE / PE

Child initiated learning

Story time / Library

Home time



THE EARLY YEARS CURRICULUM



LAURANCE HAINES
SCHOOL

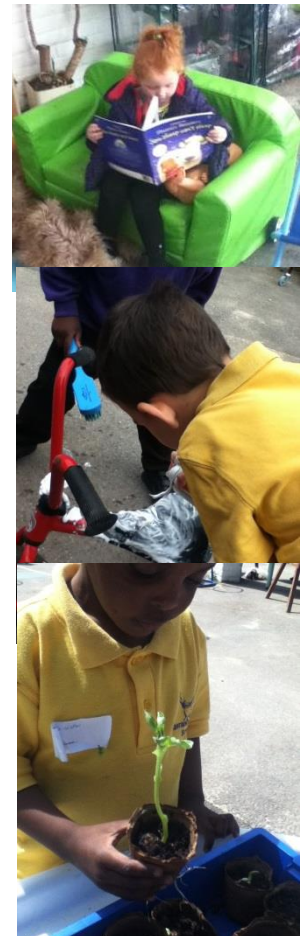
There are 7 areas of learning.

The 3 prime areas children develop first are:

- ▶ Communication and language
- ▶ Physical development
- ▶ Personal, social and emotional development

The 4 specific areas are:

- ▶ Literacy, Mathematics, Understanding the World and Expressive arts and design



PSED



LAURANCE HAINES
SCHOOL

- **Interacting with others**
- **Dealing with emotions**
- **Developing confidence**
- **Reflecting on behaviour and consequences**

PD



LAURANCE HAINES
SCHOOL

- **Use large scale movements such as climbing, running, jumping**
- **Manipulating objects using small scale movements e.g. cutting, drawing, threading**
- **Pencil control**
- **Health, self-care and Personal hygiene**



- **Talking with peers and familiar adults**
- **Following instructions and understanding questions**
- **Using talk for imaginary situations**
- **Listening to and understanding stories**



- **Singing number rhymes & counting**
- **Exploring patterns & shapes**
- **Problem solving using their own ideas and working with others**



- **Exploring books**
- **Listening for sounds and rhyme**
- **Hearing sounds and recognising letters**
- **Mark making**
- **Writing simple sentences with some simple punctuation**

UTW



LAURANCE HAINES
SCHOOL

- **Exploring the world around them**
- **Using computers and other technology**
- **Awareness of own and other cultures and celebrations**

EAD



LAURANCE HAINES
SCHOOL

- **Enjoy messy activities, exploring what happens**
- **Developing their ideas**
- **Exploring a range of media**
- **Role-play and make believe**
- **Music and dance**

CORE SKILLS



LAURANCE HAINES
SCHOOL

Self-regulation (Risk)

Receptive Language

Respect each other and environments

Phonics (RWI – Progression)

Early Writing Skills - Pencil grip and posture.

Early mark-making - Letter Formation

Understanding of story structure

Exploration of Movement

Listening and Attention

Expressive Language (Role Play)

Forming Positive Relationships

Cutting skills

Designing and Making

Counting

Reasoning

Managing Self

READING



LAURANCE HAINES
SCHOOL

- ▶ We follow the RWI phonics programme. Children learn a new sound each day and after each set of sounds, they practise blending the sounds together to read words.
- ▶ Every child learns differently and some children will develop this skill sooner than others.
- ▶ Once your child is able to blend they will bring home a reading book. Before this your child will bring home a story book which they can change as frequently as they want. Please read daily to your child as this is very important in their journey in learning to read.
- ▶ They will also bring home a reading record book which contains information and comments about the ways that you can support your child's reading development and their current progress. We encourage you to make comments on the books your child is reading and their reading development so please make sure you write in the record book each time you hear your child read.



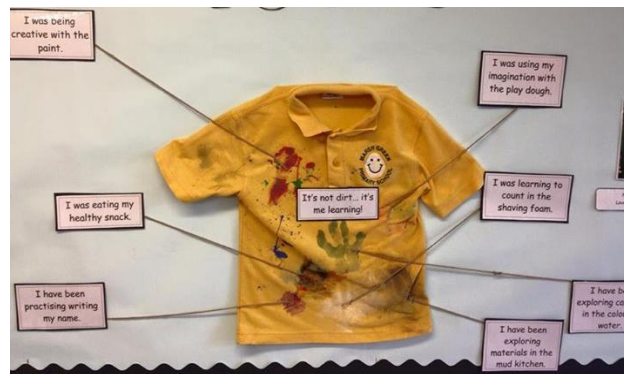
PLAY



LAURANCE HAINES SCHOOL

Each day the children have a period of child initiated learning. This is where the children learn through their play. It is a very important part of the children's learning. Playing helps a child with their communication skills, personal and social skills, problem solving, physical and creative skills as well as their mathematical and literacy ability.

Reception Learning is not always clean! Please be understanding!



OUTSIDE LEARNING WHATEVER THE WEATHER



LAURANCE HAINES
SCHOOL

The children will also spend time playing and exploring outside. This helps their physical skills as much as their ability to learn about the world around them.

We use the garden as our outside classroom!



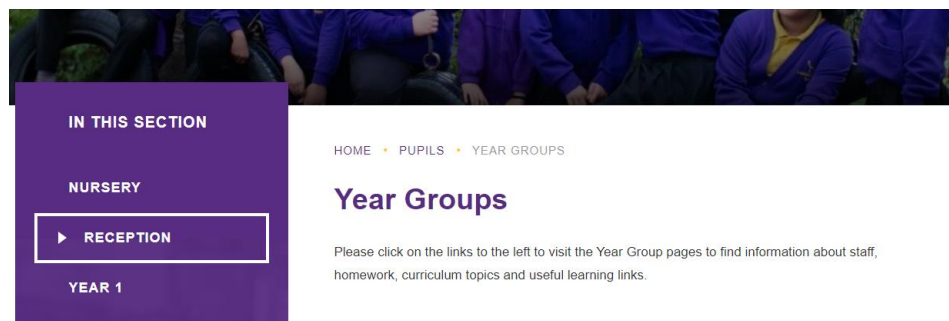
INFORMATION



LAURANCE HAINES
SCHOOL

You will find lots of information about starting school, Videos from the teachers and exciting things you can do with your child on our website.

Pupils / Reception / New to Reception 2023/24



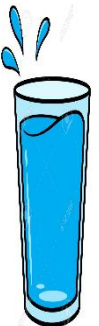
SNACK



LAURANCE HAINES
SCHOOL

Everyday the children are provided with a piece of fruit/veg and a drink. This is a very important part of our daily routine.

If your child was born after 20th December 2018 then they are entitled to free school milk. If your child is 5 before 20th December 2023, then you will need to pay if you wish for them to have milk, which is £26.64 for the Autumn term.



LUNCHTIMES



LAURANCE HAINES
SCHOOL

Lunch is provided by Chartwells Ltd.

They prepare a number of freshly cooked hot meals every day, which includes a vegetarian option. There are also jacket potatoes with various fillings.

They cater for a wide variety of dietary requirements including halal

All children in Reception receive a free lunch

Our menu will change each term to reflect the changing seasons.



@lunch_at_LHS



YOUR CHILD WILL NEED



LAURANCE HAINES
SCHOOL

- **A Book bag**
- **Wellington boots**
- **Named Water Bottle**
- **Rain/Puddle Suit**
- **A drawstring bag with spare clothes/ PE Kits**
- **A coat**



PE KITS



LAURANCE HAINES
SCHOOL

All children must have the following PE kit in school at all times

- T-Shirt in your child's house colour (Ebury = red, Gade = yellow, Chess = blue or Colne = green), with school logo
- Black PE shorts / black jogging bottoms
- Trainers for outdoors (no logos) and plimsolls for indoors
- Long hair should be tied back and absolutely no jewellery, including earrings, should be worn.

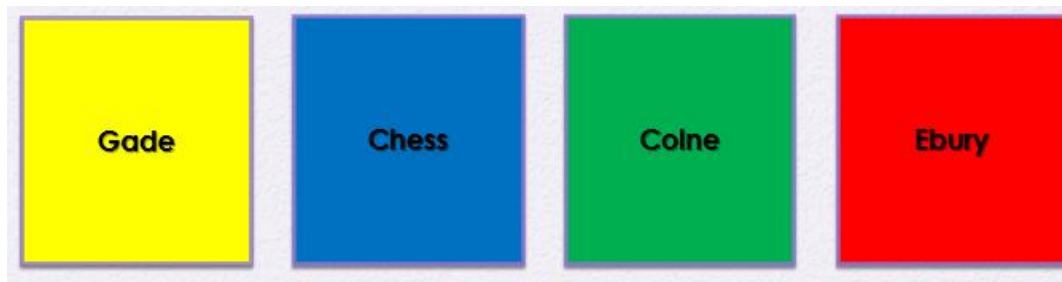


HOUSES



LAURANCE HAINES
SCHOOL

PE tops come in four colours, representing the four school houses. If you are not sure what colour top your child needs please ask.



The house system aims to provide a sense of competition and fun through a range of school based activities. All children and members of staff are attached to one of four houses which are named after local rivers and routes.

YOUR CHILD WILL NEED



LAURANCE HAINES
SCHOOL

- **School uniform**
 - **Every child must wear the correct uniform**
 - **Our Uniform Supplier is Mapac, order online or by post**
 - **PE t-shirt needs to be house colour**
 - **PE sessions will be taught every week. Any earrings should be removed.**
 - **Velcro shoes – no laces until they can tie them!**
-
- ▶ **Please ensure ALL of your child's belongings are clearly labelled. This make it much easier to return any lost items.**
 - ▶ **Wellington boots and puddle suits are a good investment for the colder winter months. We learn outside at all times in the year!**



SCHOOL HEALTH



LAURANCE HAINES
SCHOOL

When a child starts school at the age of five, care is transferred from health visitors to our school nurse.

The School Nursing Service aims to promote a healthy lifestyle and work with children and young people, their parents/carers and school staff to offer individual health advice and support where needed.

All children will be seen to assess their growth, vision and hearing.

<https://www.youtube.com/watch?v=7RoTkp3vkB0>

THE PARENTS - YOU



LAURANCE HAINES
SCHOOL

A child's parents are their main educators. At Laurance Haines we value your partnership and thank you for entrusting us with the care and education of your children.

There are lots of ways you can get involved in school life:

- **Have daily contact with the adults in your child's class**
- **Attend meetings designed to help you to support your child at home**
- **Read and contribute to Learning Journeys (Tapestry)**
- **Help in school – volunteer in classrooms, come along to the library, talk to us about your skills or interests**
- **Help us with your expertise**

HOW YOU CAN HELP US



LAURANCE HAINES
SCHOOL

Over the summer please begin to work with your child on:

- ▶ Toilet training
- ▶ Dressing and undressing themselves
- ▶ Recognising, counting to 10.
- ▶ Holding scissors and practising cutting
- ▶ Answering questions about stories you have read
- ▶ Answering questions about outings you have been on
- ▶ Provide instructions for them to follow e.g. please put your toys in the box and choose a reading book



THE LEARNING JOURNEY

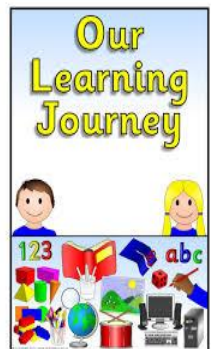


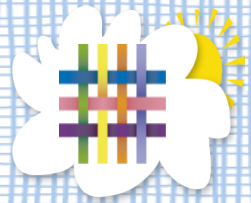
LAURANCE HAINES
SCHOOL

We track children's learning through use of Learning Journeys through the app Tapestry.

Learning journey consists of photographs, recordings and observations that have been taken during the school day.

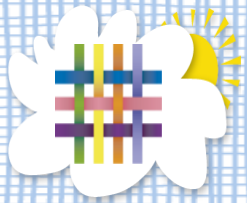
Further details about our Learning Journeys will be provided in September.





What Is Tapestry?

- An Online learning journal system.
- Staff record children's progress and activities using tablet devices and PCs.
- Parents can view their child's journal on mobile devices and on their home computers, and can make observations of their own using a secure login system.



How Does It Work?

- Photos, videos and observations are uploaded to Tapestry.
- It is accessed via the Android/iOS app or the Tapestry website.
- It enables you to comment on observations or add your own, so you can show us what your child is doing outside the school day – weekend trips, exciting learning opportunities, trip to the shops etc.
- Email notifications can be sent to inform parents of new observations and comments.

PUPIL PREMIUM



LAURANCE HAINES
SCHOOL

As a school we are able to claim an additional grant of roughly £1345 per pupil, called the Pupil Premium, for children whose parents or carers receive certain benefits.

Schools decide how to use their Pupil Premium allocation, as they are best placed to assess what additional provision should be made for these pupils within their responsibility.

It is important that you let us know if you may be eligible. We can help you apply.

PARENT VIEW



LAURANCE HAINES SCHOOL

Parent View gives you the chance to register what you think about the school. This information is used by the leadership team to inform strategic decisions as well as by Ofsted when they inspect the school.

There's a link on our website. Search 'Parentview' in Google or go to <https://parentview.ofsted.gov.uk>

- ▶ Follow the on-screen instructions to enter your email address and password .
- ▶ You'll be sent an email with a link to activate your login.
- ▶ Log-in and answer 12 simple questions.



QUESTION TIME



LAURANCE HAINES
SCHOOL

No question is a silly question...

If anyone has anything they would like to ask please feel free to do so.

If you have any questions personal to your family there will be an opportunity to ask these at your virtual home visit or at a specially arranged meeting.

earlyyears@lhaines.herts.sch.uk



Finally...

Thank you for attending today. All of the staff are looking forward to meeting you and the children.

If you have any concerns or issues during the next year please come and speak to one of us.

Many thanks for coming!

A white chalk stick is positioned vertically, with a decorative white chalk line drawn across the bottom of the text area, starting from the stick and curving to the right.