



# Nursery Newsletter



11<sup>th</sup> March 2022

[earlyyears@lhaines.herts.sch.uk](mailto:earlyyears@lhaines.herts.sch.uk)

@NurseryLHS

## Rhyme of the Week

### Mary, Quite Contrary

Mary, Mary, quite contrary,  
How does your garden grow?  
With silver bells  
And cockle shells,  
And pretty maids  
All in a row.



SCAN ME

We are still needing lots of donations.  
Please can you help!

We are still asking for donations of:

Bamboo Canes

Bark

Leaves and Sticks

Logs and Twigs

Straw and Hay

Twine

Stones and Tiles

Old Pipes

Carpeting

Plant Pots

Bricks

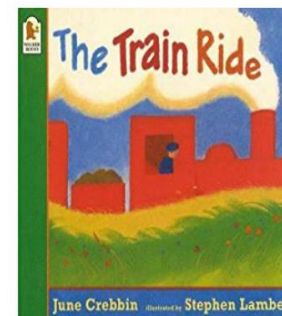
Kitchen Roll Tubes

Wood Chips

Corrugated Cardboard



## Book of the Week

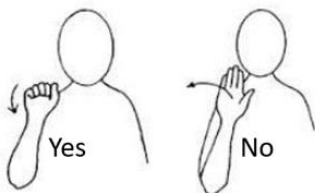


SCAN ME

**Please remember that our reading breakfast takes places EVERY Wednesday.**

**We would love to see more parents come along and share stories with their child.**

## Sign of the week



### Nursery times are:

Morning nursery: **8.30 - 11.30**  
Afternoon nursery: **12.30 - 3.30**  
30 hour children: **9.00 - 3.00**

### Key Dates

- Red Nose Day – 18<sup>th</sup> March – **SEE EMAIL**
- End of Term – 1<sup>st</sup> April 2pm Finish
- Easter Holidays – 4<sup>th</sup> – 18<sup>th</sup> April
- Duck Egg Hatching – May