

Laurance Haines Primary School



Parent Induction Meeting

July 2020

WELCOME



- Today we will give you information about the learning that takes place in Nursery.
- We will inform you about what your child will need in preparation for September.
- We will also let you know about how you can help your child settle when they come to Nursery and how you can help at home.

Senior Management Team



Mrs Elizabeth Butler
SENCO



Mr Sebastian Gray
Headteacher



Mrs Jo Ball
Assistant Headteacher



Mrs Nicola Furey
PST Leader



Miss Yasmin Rose
Foundation Stage Leader

Nursery Team



Miss Rose
Class Teacher



Mrs Jill Green
Senior Early Years Practitioner



Mrs Linda Butler
Teaching Assistant



Mrs Pandora Moyo
Teaching Assistant



Mrs Shabina Butt
Teaching Assistant

Getting to know you and your child



We will do this by:

- Virtual home visits
- Stay and play sessions
- Information gathered from you
- Opportunities to ask questions and share concerns

Nursery Hours



- Morning Nursery 8:30 – 11:30
- Afternoon Nursery 12:30 – 3:30
- 30 hours Nursery 9:00 – 3:30



If your child is late for any reason and arrives after 8.55 and 12:55, the classroom door will be closed and you must take them to the school office to be registered.

Children start with activities that encourage them to strengthen the muscles in their fingers. It is important that they arrive on time as this session supports children's ability to develop their pencil control.

Attendance and Punctuality



- If your child is unable to attend school due to illness, please ring the school office in the morning.
- If your child has an appointment could you please inform the school office with the details.
- Laurance Haines will not authorise any absences during term time.
- Our target for attendance is 96%
- Book dental/medical appointments for October half term NOW!



Attendance and Punctuality



As parents, please help us by:

- Ensuring your child arrives on time
- Ensuring your child is properly dressed in the correct uniform
- Encouraging good behaviour
- Notifying us if your child is ill
- Avoiding appointments in school time
- Not taking holidays in term-time

Communication



School Office Opening hours: 8.40am – 4.30pm

We use a number of ways to keep you in touch with you:

- Weekly Nursery newsletter
- Fortnightly whole school newsletter
- Text messaging/email service
- Parent meetings
- Website
- Facebook
- Twitter  @LHS_Watford



Please ensure the front office has your most current address and phone number. If you change your mobile number let us know immediately so that we are able to contact you in the case of emergency.

Please ensure we are aware of any allergies your child may have.

Settling into Nursery life

- There is staggered start in order to support your child settling in.
- We expect parents to stay with the children for at least the first day if unsettled.
- You may even need to be in Nursery with your child for a few days in order to settle them fully.
- These time scales are variable to meet the individual needs of the child.

The Early Years Curriculum



There are 7 areas of learning.

The 3 prime areas children develop first are:

- Communication and language
- Physical development
- Personal, social and emotional development

The 4 specific areas are:

- Literacy, Mathematics, Understanding the world, Expressive arts and design



Personal, Social & Emotional Development



- Interacting with others
- Dealing with emotions
- Developing confidence
- Reflecting on behaviour and consequences

Physical Development



- Use large scale movements such as climbing, running, jumping
- Manipulating objects using small scale movements e.g. cutting, drawing, threading
- Pencil control
- Health, self-care and Personal hygiene

Communication & Language



- Talking with peers and familiar adults
- Following instructions and understanding questions
- Using talk for imaginary situations
- Listening to and understanding stories

Mathematics



- Singing number rhymes & counting
- Exploring patterns & shapes
- Problem solving using their own ideas and working with others

Literacy



- Exploring books
- Listening for sounds and rhyme
- Hearing sounds and recognising letters
- Mark making
- Writing simple sentences with some simple punctuation

Understanding of the World



- Exploring the world around them
- Using computers and other technology
- Awareness of own and other cultures and celebrations

Expressive Arts & Design



- Enjoy messy activities, exploring what happens
- Developing their ideas
- Exploring a range of media
- Role-play and make believe
- Music and dance

Play



Each day children have a period of child initiated learning. This is where the children learn through their play. It is a very important part of the children's learning. Playing helps a child with their communication skills, personal and social skills, problem solving, physical and creative skills as well as their mathematical and literacy ability.



Outside Learning Whatever the Weather!



The children will also spend time playing and exploring outside. This helps their physical skills as much as their ability to learn about the world around them.

We use the garden as our outside classroom!



A Typical Day



Morning session

8:30 – 9:00

Busy Fingers

Carpet time

9:00 – 11:00

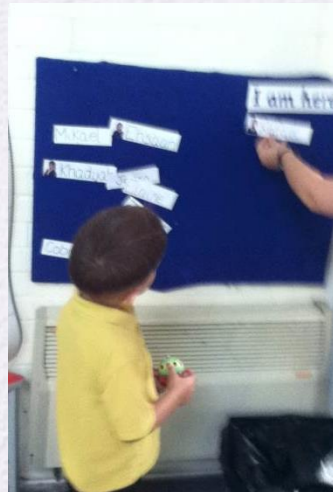
Phonics

Child initiated learning

Focus Activities/Maths/Topic

11:00 – 11:30

Snack, story and home time



Afternoon session

12:30 – 1:00

Busy Fingers

Carpet time

1:00 – 3:00

Phonics

Child initiated learning

Focus Activities/Maths/Topic

3:00 – 3:30

Snack, story and home time

Key Workers



- The **key worker** is a named practitioner who has **responsibilities** for a small group of children, they are there to help your child feel safe and secure.
- The **role** is important for both child and parent
- A **Key Worker** will be a point of contact for parents as well as the Nursery Teacher



Snack



Everyday the children are provided with a piece of fruit and a drink. This is a very important part of our daily routine.

Your child is entitled to free school milk.



Lunchtimes



Lunch is provided by Chartwells Ltd.

They prepare a number of freshly cooked hot meals every day, which includes a vegetarian option. There are also jacket potatoes with various fillings.

They cater for a wide variety of dietary requirements including halal

If you would like your children to have a school dinner then it is £2.15 everyday. Alternatively your child can bring in a packed lunch.

Our menu will change each term to reflect the changing seasons.



[@lunch at LHS](https://twitter.com/@lunch_at_LHS)



Children's Welfare



Accidents do happen!

- We encourage children to explore and take risks within a safe space.
- We have trained first-aiders but will contact you if we think necessary.
- Please inform us about medical conditions.
- Please keep children at home and for 24hrs after sickness.

We do not shy away from risk and actively encourage our children to experience more risky activities, such as fire building and tree climbing, in an environment that can support them to do so as safely as possible!

Your child will need:



- A bag
- Wellington boots
- Spare clothes to change into
- A coat



Your child will need:



- School uniform
- Every child must wear the correct uniform
- Our Uniform Supplier is Mapac, order online or by post
- Velcro shoes – no laces until they can tie them!
- Please ensure ALL of your child's belongings are clearly labelled. This make it much easier to return any lost items.
- Wellington boots and waterproof trousers are a good investment for the colder winter months. We learn outside at all times in the year!



Pupil Premium



As a school we are able to claim an additional grant per pupil, called the Pupil Premium, for children whose parents or carers receive certain benefits.

Schools decide how to use their Pupil Premium allocation, as they are best placed to assess what additional provision should be made for these pupils within their responsibility.

It is important that you let us know if you may be eligible. We can help you apply.

The Parents - YOU!



A child's parents are their main educators. At Laurance Haines we value your partnership and thank you for entrusting us with the care and education of your children.

There are lots of ways you can get involved in school life:

- **Have daily contact with the adults in your child's class**
- **Attend meetings designed to help you to support your child at home**
- **Read and contribute to Learning Journeys**
- **Help in school – volunteer in classrooms, come along to the library, talk to us about your skills or interests**
- **Help us with your expertise**

How you can help us



Over the summer please begin to work with your child on:

- Toilet training
- Dressing and undressing themselves
- Recognising, counting to 5.
- Answering questions about outings you have been on
- Provide instructions for them to follow e.g. please put your toys in the box and choose a reading book



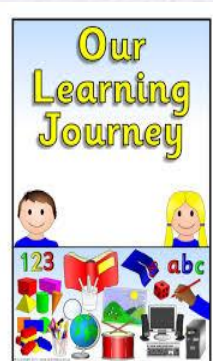
The Learning Journey

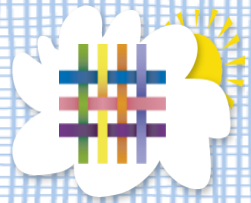


We track children's learning through use of Learning Journeys through the app Tapestry.

Learning journey consists of photographs, recordings and observations that have been taken during the school day.

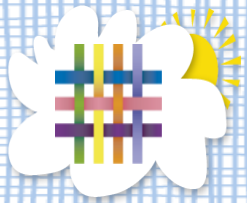
Further details about our Learning Journeys will be provided in September.





What Is Tapestry?

- An Online learning journal system.
- Staff record children's progress and activities using tablet devices and PCs.
- Parents can view their child's journal on mobile devices and on their home computers, and can make observations of their own using a secure login system.



How Does It Work?

- Photos, videos and observations are uploaded to Tapestry.
- It is accessed via the Android/iOS app or the Tapestry website.
- It enables you to comment on observations or add your own, so you can show us what your child is doing outside the school day – weekend trips, exciting learning opportunities, trip to the shops etc.
- Email notifications can be sent to inform parents of new observations and comments.

Parentview



Parent View gives you the chance to register what you think about the school. This information is used by the leadership team to inform strategic decisions as well as by Ofsted when they inspect the school.

There's a link on our website. Search 'Parentview' in Google or go to <https://parentview.ofsted.gov.uk>

- Follow the on-screen instructions to enter your email address and password .
- You'll be sent an email with a link to activate your login.
- Log-in and answer 12 simple questions.



30 Hour Places



30 HOURS FREE CHILDCARE

Age
3&4

- For **working** families in **England**
- With **3 and 4-year-old** children
- **30 hours of free childcare** or early education for **38 weeks**
- A total of **1,140 hours per year**, that you can use flexibly with one or more childcare provider

www.gov.uk/30-hours-free-childcare

Question Time



No question is a silly question...

If anyone has anything they would like to ask please feel free to do so.

If you have any questions personal to your family there will be an opportunity to ask these at your virtual home visit or at a specially arranged meeting.

earlyyears@lhaines.Herts.sch.uk



Finally...

Thank you for attending today. All of the staff are looking forward to meeting you and the children.

If you have any concerns or issues during the next year please come and speak to one of

us.

Many thanks for coming!

A white chalk stick is positioned vertically, with a decorative white line drawn on the chalkboard surface. The line starts from the bottom left, curves upwards and to the right, then loops back down and to the left, ending near the bottom right.